



产品宣传册 PRODUCT BROCHURE



 新乡浩宇起重机械有限公司
XINXIANG HYCRANE CO.,LTD

E-mail:info@hycranes.com

Tel:0086-373-2712388

Website:www.hycranes.com



新乡浩宇起重机械有限公司
XINXIANG HYCRANE CO.,LTD

Leading the world with innovation,
moving the world with the quality.

CONTENTS

01	Company background
03	Necessary certifications
05	Bridge girder erection machine
07	Hoist
13	Overhead crane
21	Gantry crane
25	Port crane
27	Jib crane
29	Transfer cart
31	Electric winch
33	Gate hoist
35	Electromagnet and hang beam
37	We can also offer other parts
41	Production Process
45	Export case
49	After-sales service promises





COMPANY BACKGROUND

Hycrane co.,ltd. is a Lifting equipment manufacturer and service provider, which has more than 60years machinery manufacturing experience. As a hi-tech enterprise with vitality and passion, it is specialized in high-end lifting equipments and advanced materials handling solutions. A variety of machineries are produced by us, such as electric hoist, gantry crane, overhead/bridge crane, jib crane, tower crane, port crane, shipbuilding gantry crane, Bridge girder erection machine, crane accessories. The design and manufacture of HY products are according to the European Union CE certification standards and under the supervision of Bureau Veritas of French, Our clients include manufacturing and process industries, shipyards, ports and so on. Regardless of your lifting needs, Hycrane is committed to provide you with lifting equipments and services that increase the effectiveness and value of your business.



A Hycrane group have already obtained the CCC、CE、BV、SGS、ISO OHSAS certificates and have won over 60 honors.

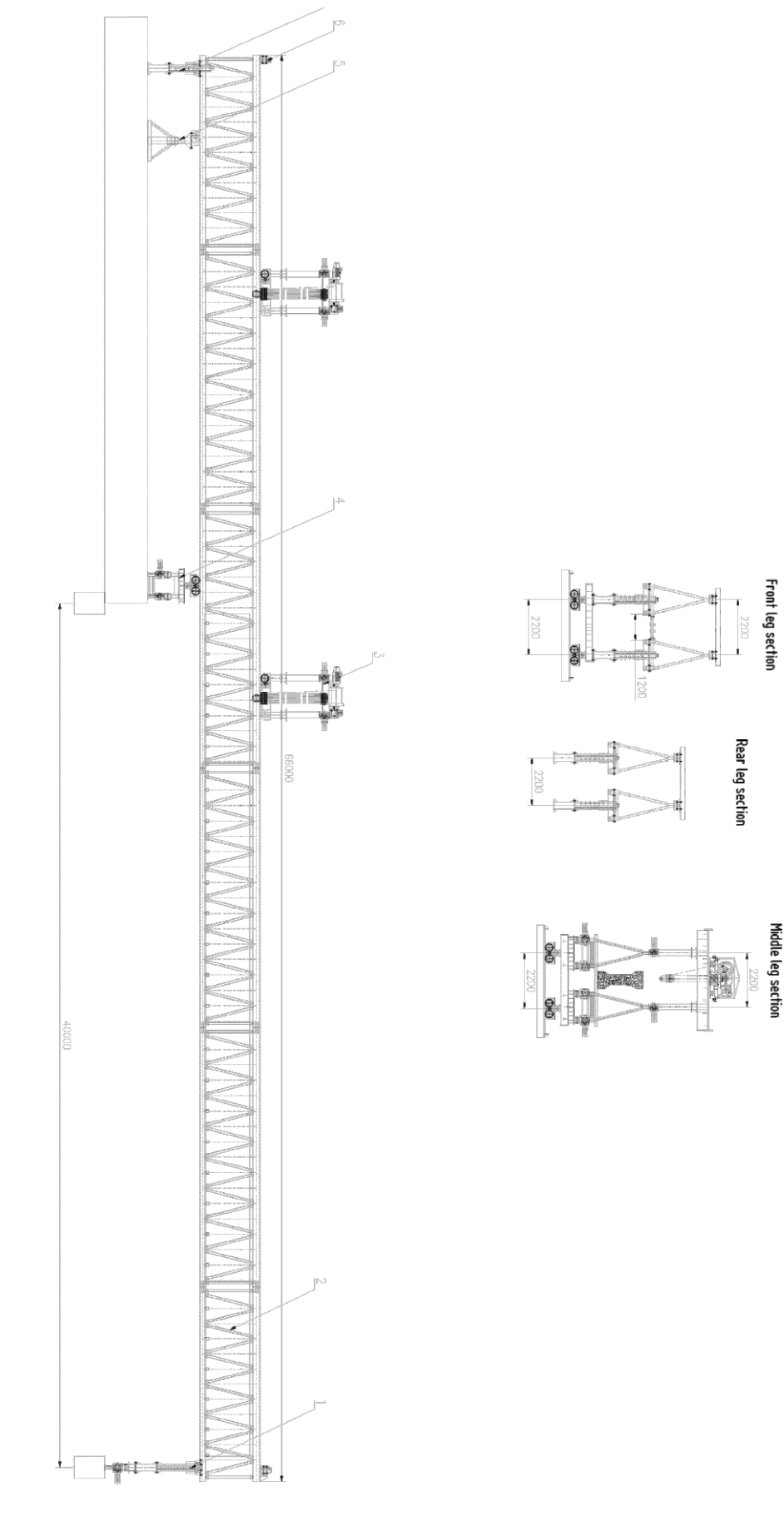
Our factory covers an area of 180,000 square meters and has over 380 pieces (sets) of modern producing and testing equipments. Its total assets and registeres capital is over RMB200 million yuan. Serviced for more than 5000 companies, and the products are popular in more than 40 countries.

B China's leading mechanical research and design institute and famous university provides advanced technical support for us.

NECESSARY CERTIFICATIONS



CE & ISO Certification



BRIDGE GIRDER ERECTION MACHINE

- Bridge Girder Erection Machine is the lifting equipment which can place the fine precast beam piece on the preformed bridge pier.
- Settled into highway bridge machine, the conventional railway bridge, passenger dedicated railway bridge etc.
- It can be divided into single beam girder-erecting machine, double cantilever girder-erecting machine, double beam girder-erecting machine.



Truss beam launcher girder crane



Beam lifting gantry crane



Girder transportation vehicle

MAIN PRODUCTS ELECTRIC HOIST

- Electric hoist is composed of motor, driving mechanism, and roller, or sprocket. Wire rope hoist and chain hoist are two main types.
- The electric hoist can be installed on different types of bridge crane, gantry crane, and jib crane. In addition, it can work as a winch with slight modification. Its applications include factories, mines, ports, warehouses, cargo storage areas, and shops; significantly improve work efficiency despite the different working conditions.
- Capacity: 0.5~80t, Lifting height:3~30m. Working class: M3 ~ M5.



Wire rope hoist



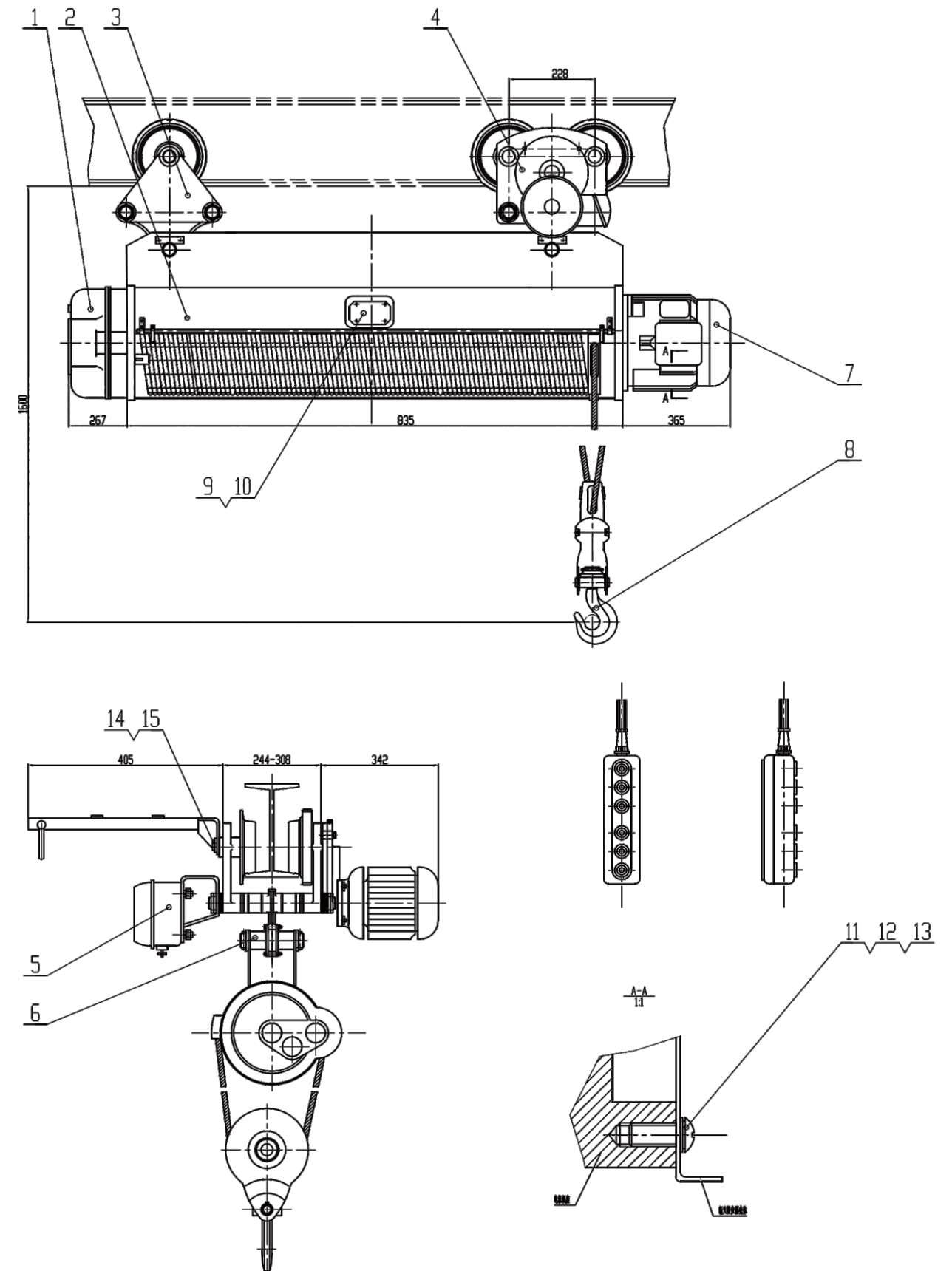
explosion proof hoist



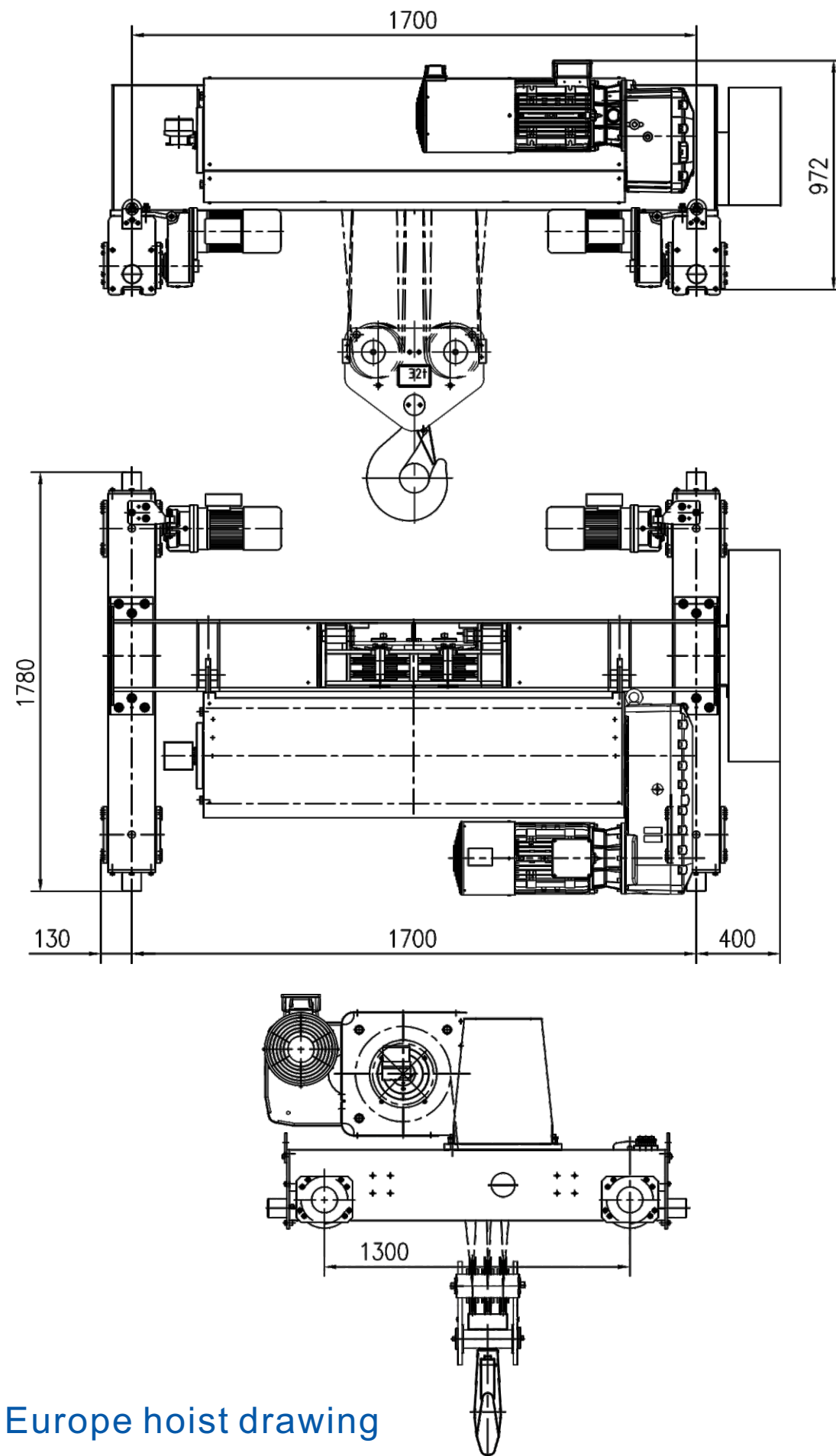
Wire rope hoist with trolley



Wire rope hoist



Main products electric hoist drawing



Europe hoist drawing

▶ EUROPE HOIST

- Europe hoist is composed by motor, drive mechanism and the drum or sprocket composition, it is divided into wire rope electric hoist and chain electric hoist.
- It can be mounted on single beam, bridge, gantry and jib crane, with slight modification. It is widely used in factories, mines, harbours, warehouses, cargo storage areas and shops, essential in raising working efficiency and improving working conditions.
- Capacity: 0.5~80t, Lifting height: 3~30m. Working class: M5.



European single girder hoist



European Winch trolley



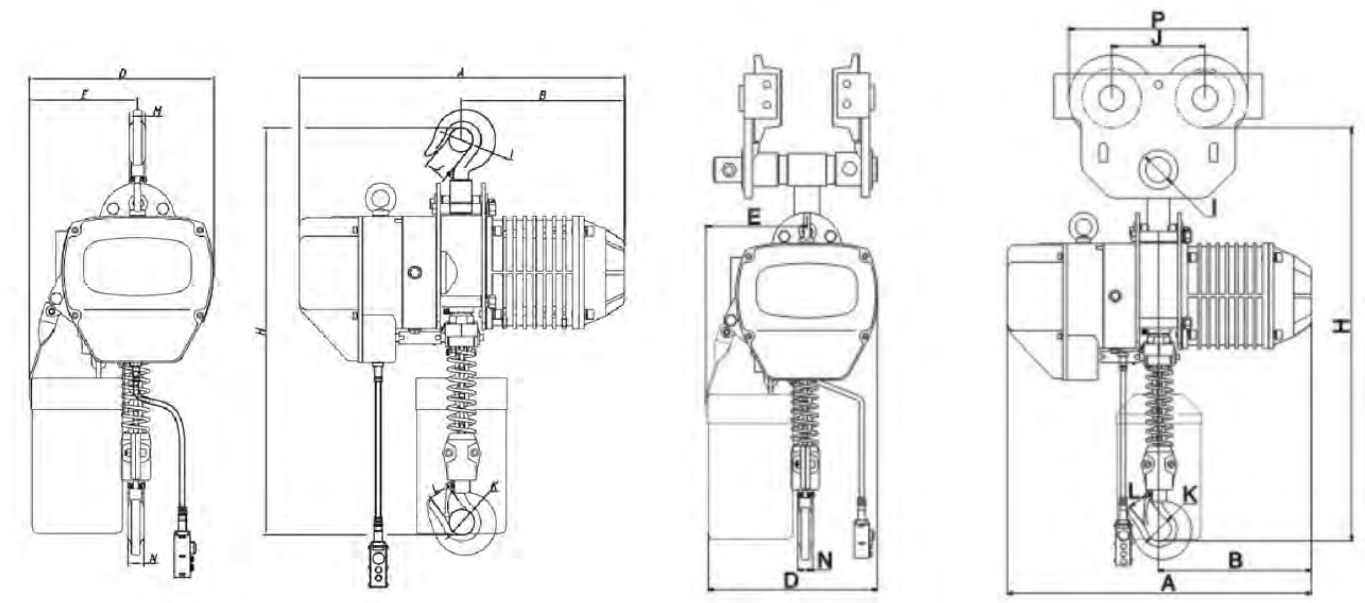
European double girder hoist



European single girder electric hoist

CHAIN HOIST

- Electric Chain hoist is a kind of light and small lifting equipment. It consists of motor, transmission mechanism and sprocket. All are produced in accordance with international standards. The capacity is generally 0.5t to 50 tons, the lifting height is 3 to 120 meters.
- Features: advanced performance and structure, small size, light weight, convenient operation, wide application range, suitable for lifting heavy objects, loading and unloading , It is very convenient to maintain equipment and lift goods. It can also be installed on suspended I-beams, curved rails, jib crane rails and fixed lifting points to lift heavy objects.



Hoist with the hook drawing

Hoist with manual trolley drawing

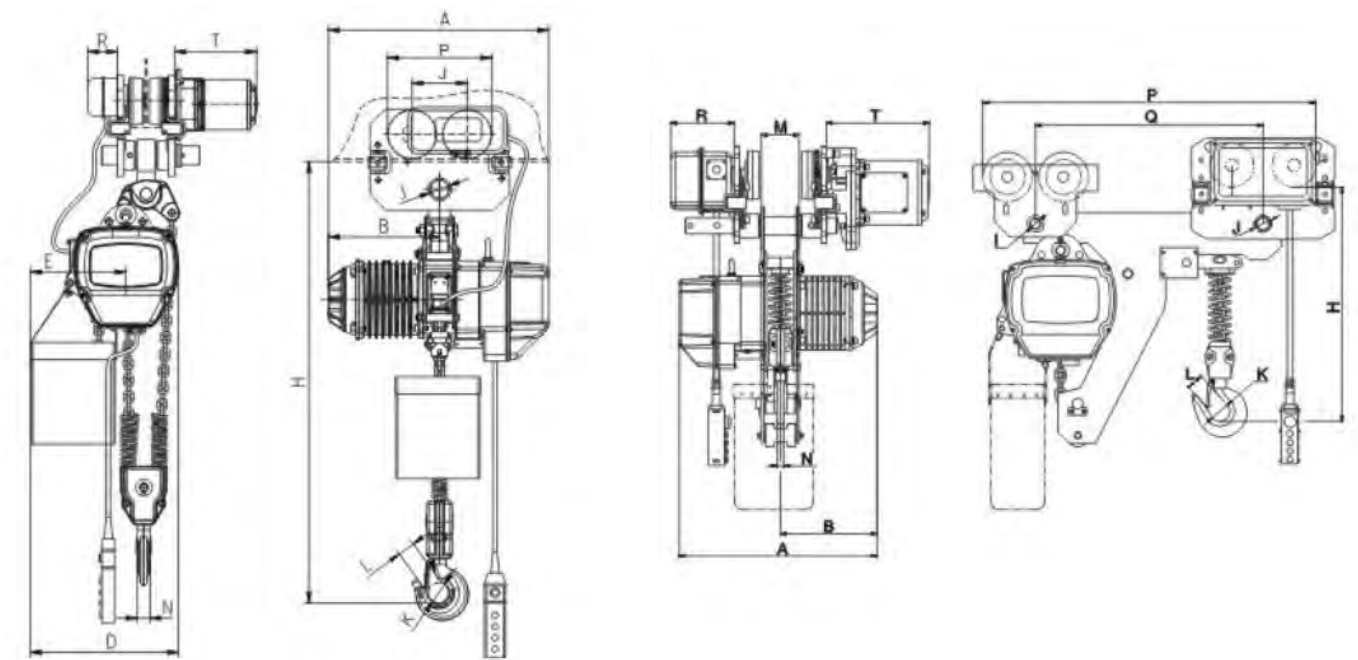


Hoist with the hook

Hoist with manual trolley

Hoist with electric trolley

Super low lifting



Hoist with electric trolley drawing

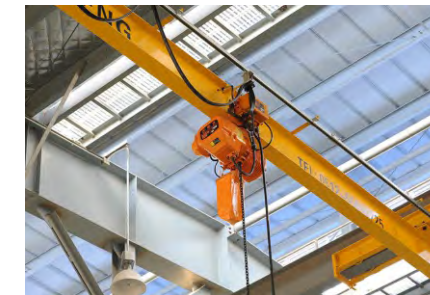
Super low lifting drawing

EUROPE SINGLE GIRDER OVERHEAD CRANE

- Single Girder Overhead Cranes utilized for medium to heavy fabrication.
- These overhead cranes are ideally suited to low buildings, where a high hook lift height is required.
- The top running configuration is best used in cases where the end user has issues with headroom.
- The most space efficient configuration is the single girder, top running Euro-crane system.



Single girder bridge crane



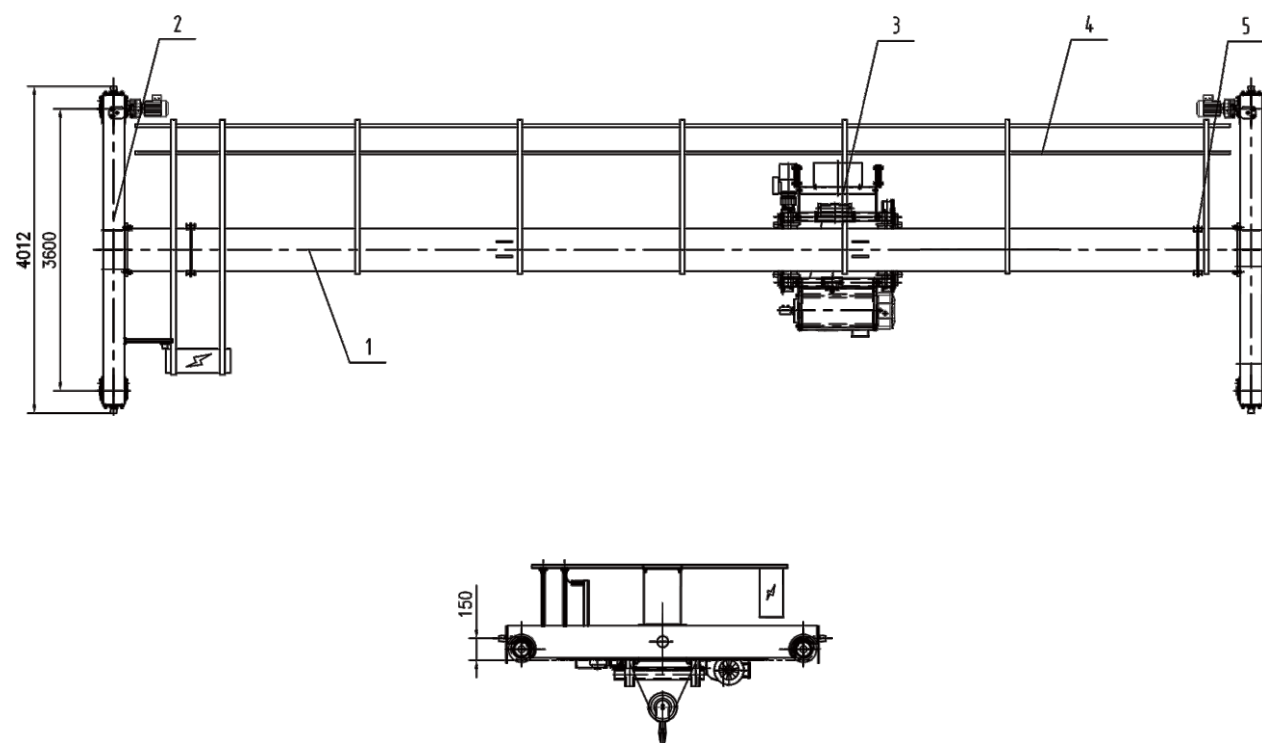
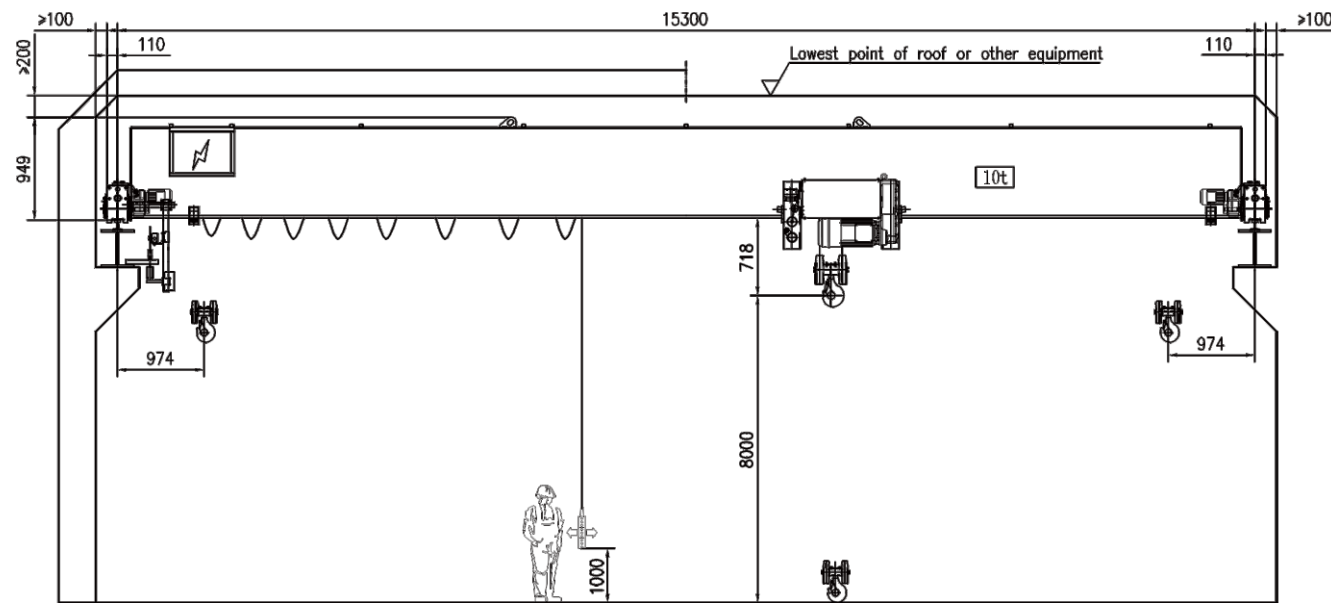
Single girder chain hoist bridge crane



Single girder bridge crane



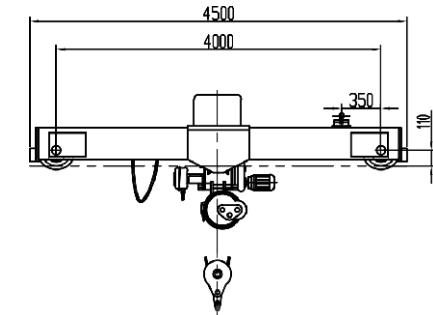
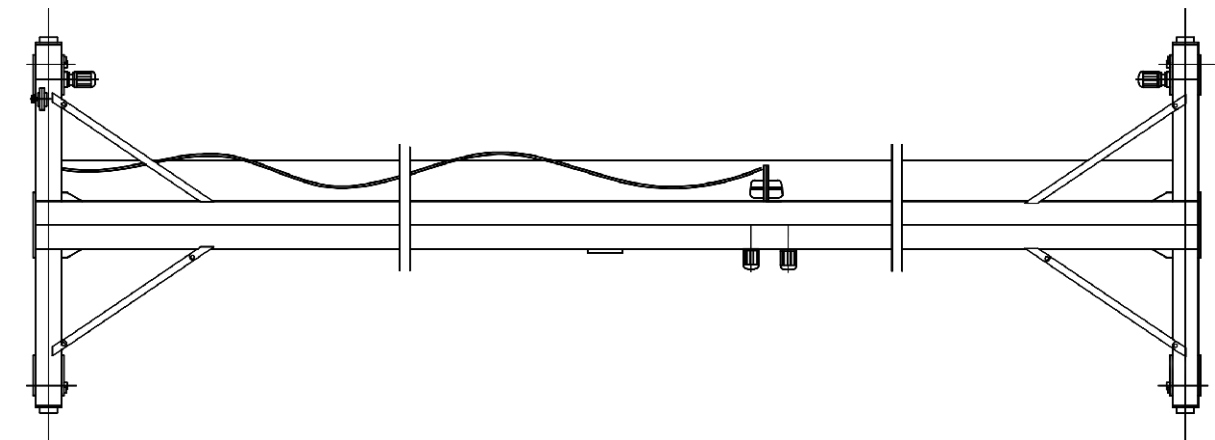
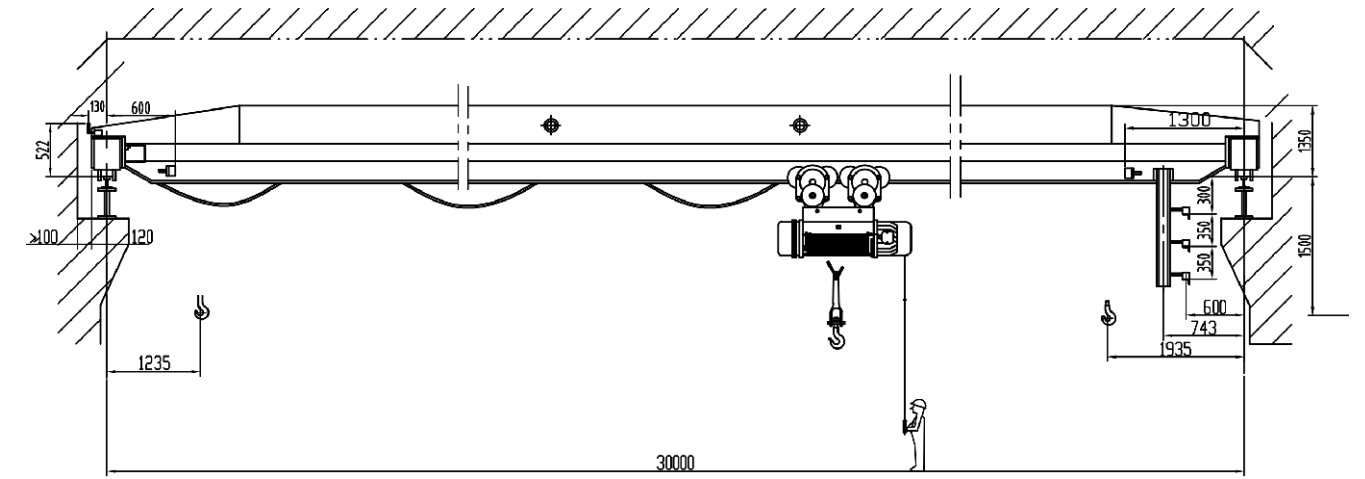
Single girder bridge crane



Europe single girder overhead crane drawing

▶ SINGLE GIRDER OVERHEAD CRANE

- Usually the chain hoist, electric hoist will be used as the lifting trolley .
- Single girder overhead crane has two operation methods: pendant control and cabin control . Can meet crane different working conditions.
- Usage: used in factories, warehouses, material stocks to lift goods. Its lifting capacity differ from 0.5 ton to 30 ton. It can fit workshop span.
- Working duty: A3-A5, to meet the daily lifting work



Suspension crane



Low headroom crane



Overhead crane



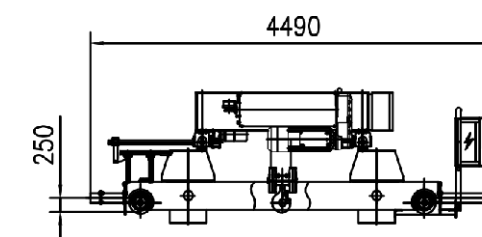
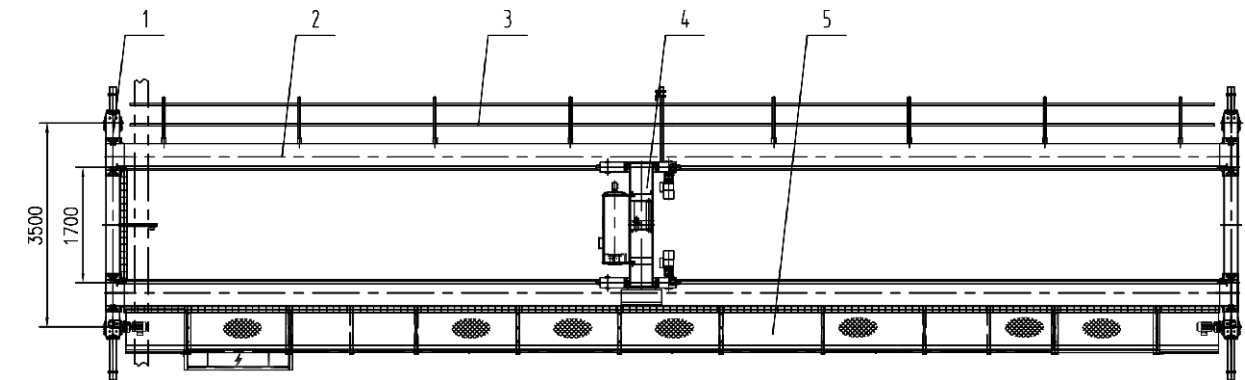
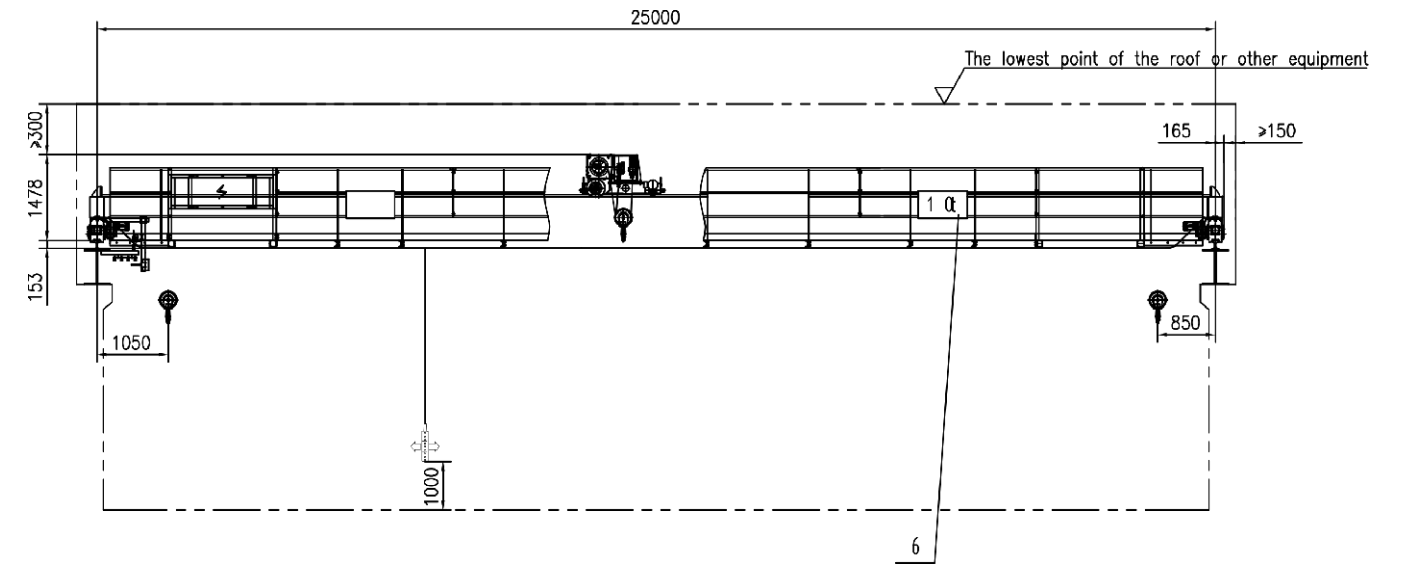
Overhead crane

Single girder overhead crane drawing



EUROPE DOUBLE GIRDER OVERHEAD CRANE

- Double girder overhead crane are designed according to European standard with features of compact design, Energy Conservation, Soft Start Motor, Easy to install and maintenance. They are applied to transfer, assembly and repair in the workshop, warehouse, plant and Power station. Working class are light and medium duty of



Double girder overhead crane



Double girder overhead crane

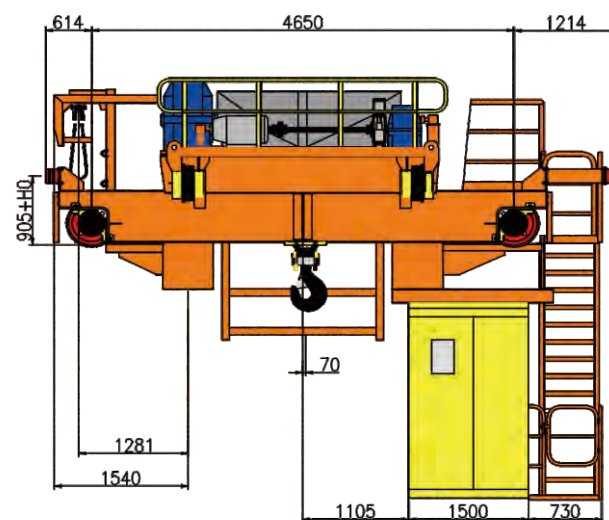
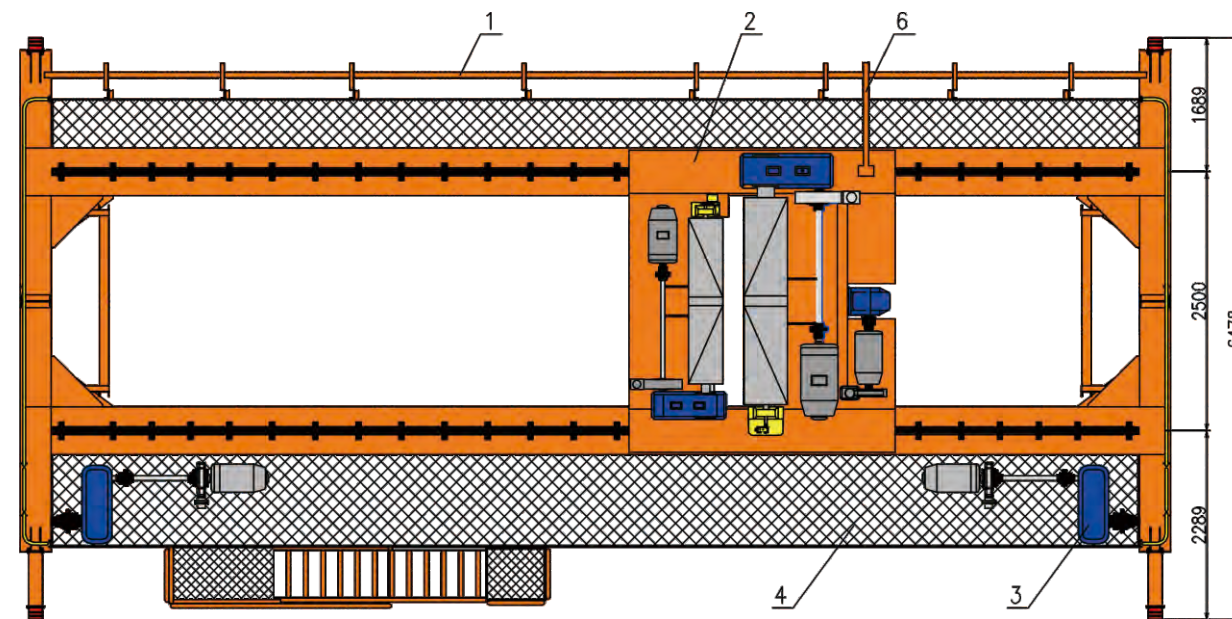
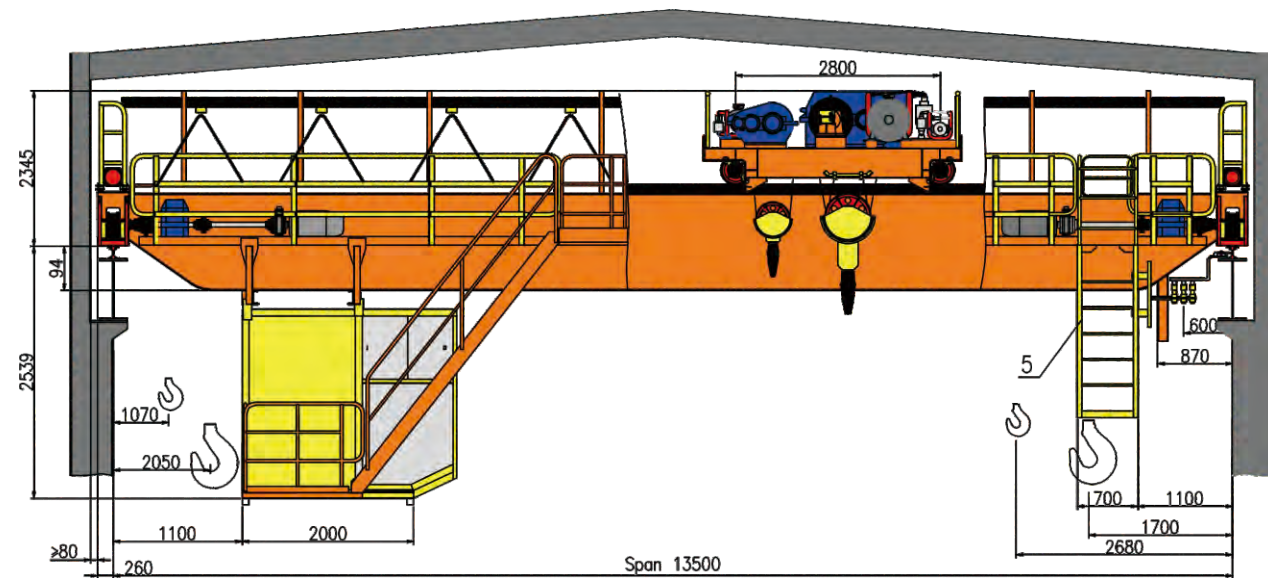


Double girder overhead crane

Europe double girder overhead crane drawing

DOUBLE GIRDER OVERHEAD CRANE

- Double Girder Overhead Crane (QD Type) are widely used in all industrial workshop and environment. The max. capacity could be 1200t. Generally, the crane are cabin control. This working class of such crane are heavy and medium duty(A5-A7), suitable for heavy industry and severe working environment. Good performance, High efficiency and flexible. According to the usage, we could offer following extended model:
 - 1. Foundry Crane (Lifting Ladle and used in Melting Workshop);
 - 2. Grab Overhead Crane (Lifting bulk cargo);
 - 3. Electromagnet Overhead Crane (Lifting Steel Scrap, Plate, bar and so on);
 - 4. Explosion-proof Overhead Crane (Used in the explosive workshop).
 - 5. Other model according to specific demands.



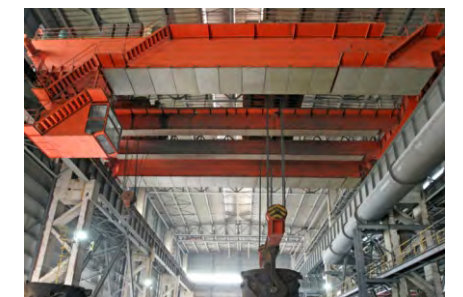
Double girder overhead crane drawing



Electromagnetism bridge crane



Electric grab bridge crane



Casting bridge crane



Double beam bridge crane



▶ SINGLE GIRDER GANTRY CRANE

Single girder gantry crane is a kind of track traveling mid-light type crane, used together with CD, MD, HC model electrical hoist, according to the shape, it also divided into MH type and MH L type gantry crane.

- Single girder gantry crane is a track traveling small and medium-sized crane. It consists of four main parts, namely, the bridge structure, the traveling mechanism, the trolley and the electric equipment. Its proper lifting weight is 5 to 32 tons, proper span is 12 to 40 meters, its proper working temperature is -20°C to $+40^{\circ}\text{C}$.
- This product is a regular crane widely used as open ground and warehouses to load, unload or grab material. It has 2 controlling methods, namely, ground controlling and cabin controlling



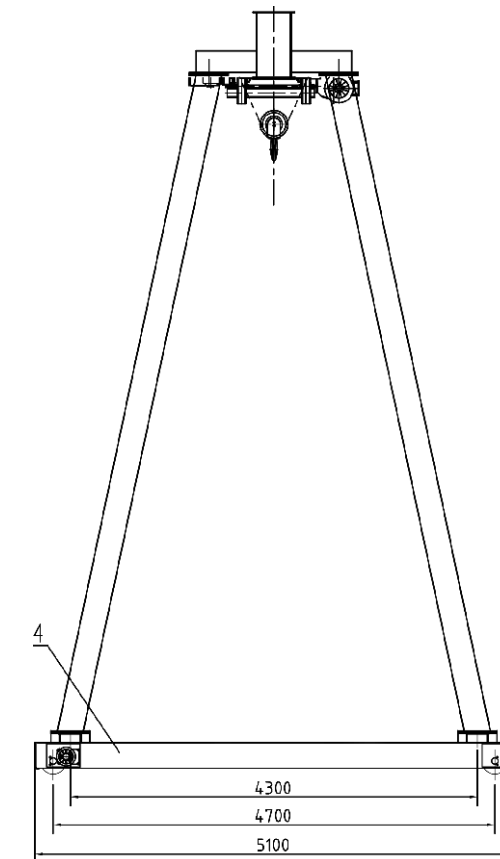
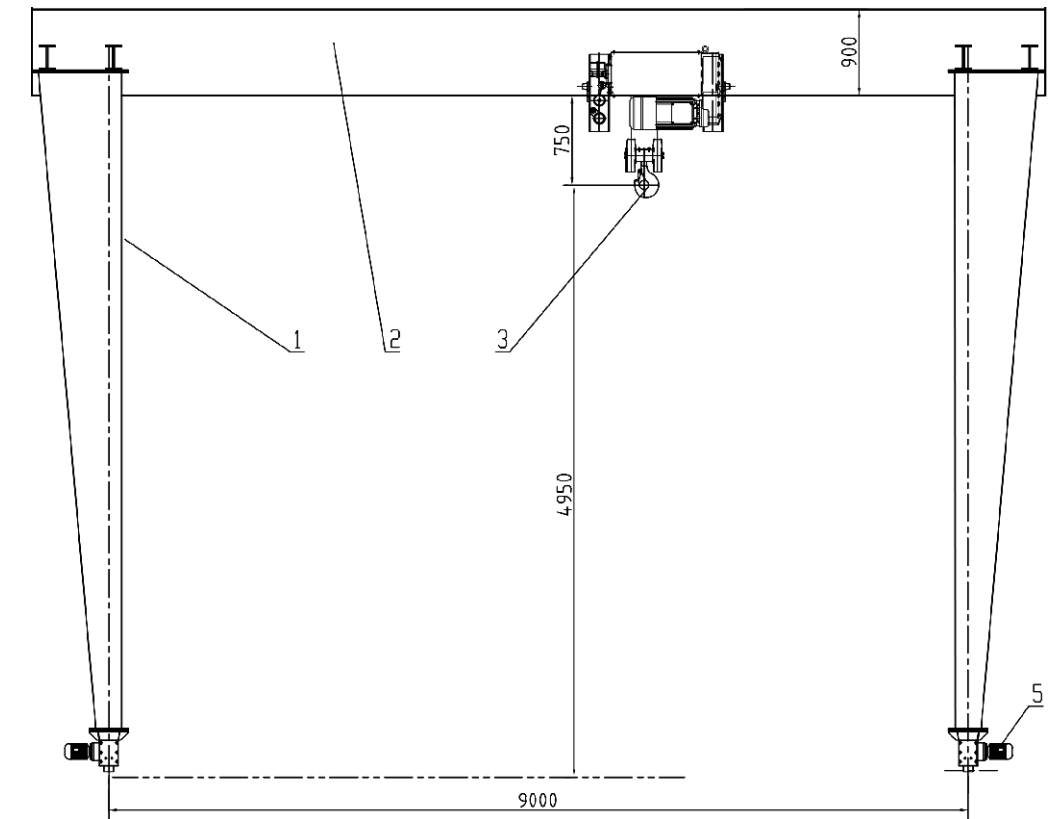
Semi-electric hoist gantry crane



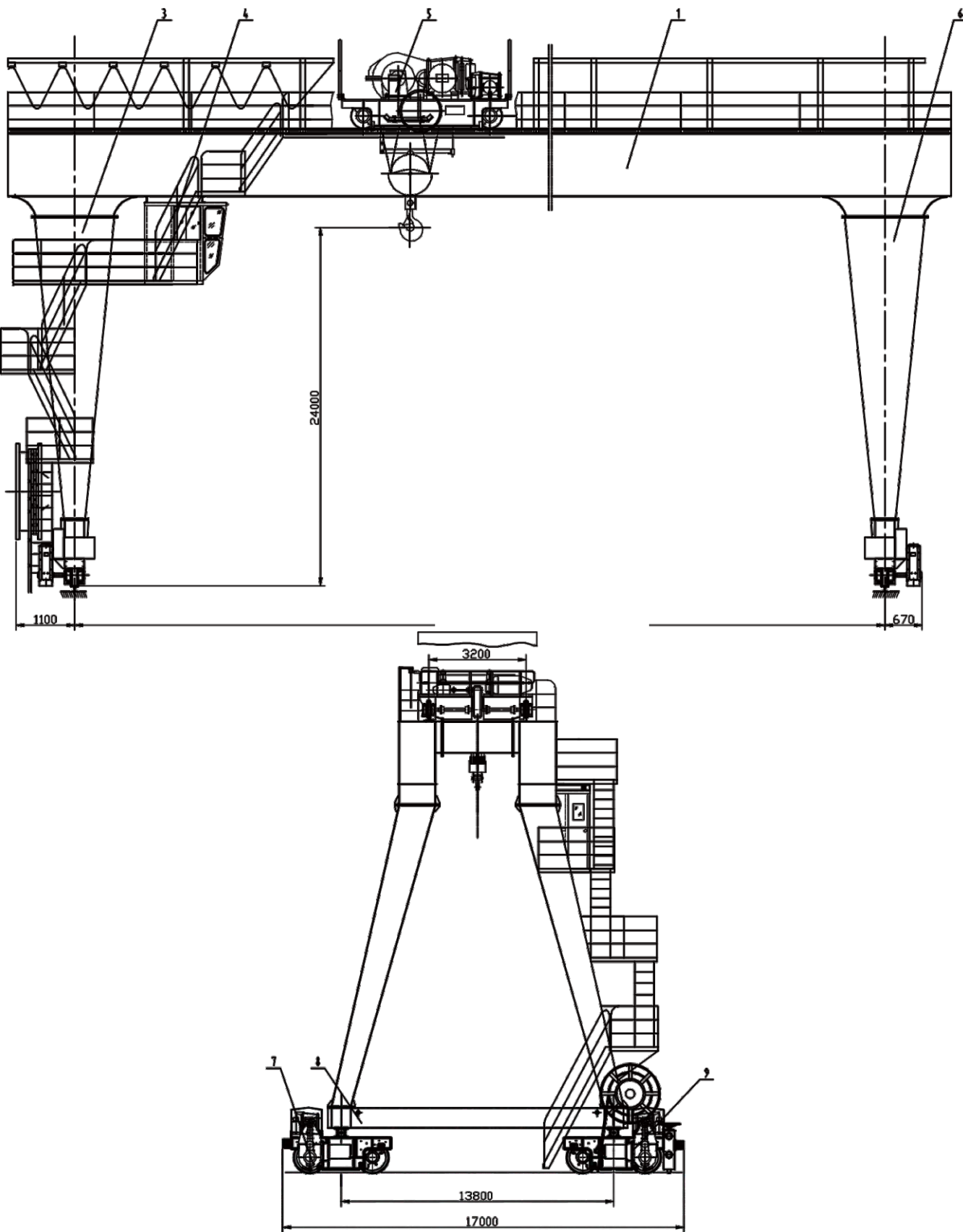
Single girder gantry crane



European electric hoist gantry crane



European electric hoist gantry crane drawing



Double girder gantry crane drawing

DOUBLE GIRDER GANTRY CRANE

- Double girder gantry crane has the advantage over the stronger capacity, big span, the good overall stability, and in many varieties. But the quality itself is larger than the same weight of single beam gantry crane .
- It consists of four main parts, namely, the bridge structure, the traveling mechanism, the trolley and the electric equipment. According to the main girder structure, it can be divided into two forms of box beam and truss beam.



Double girder gantry crane



Container gantry crane



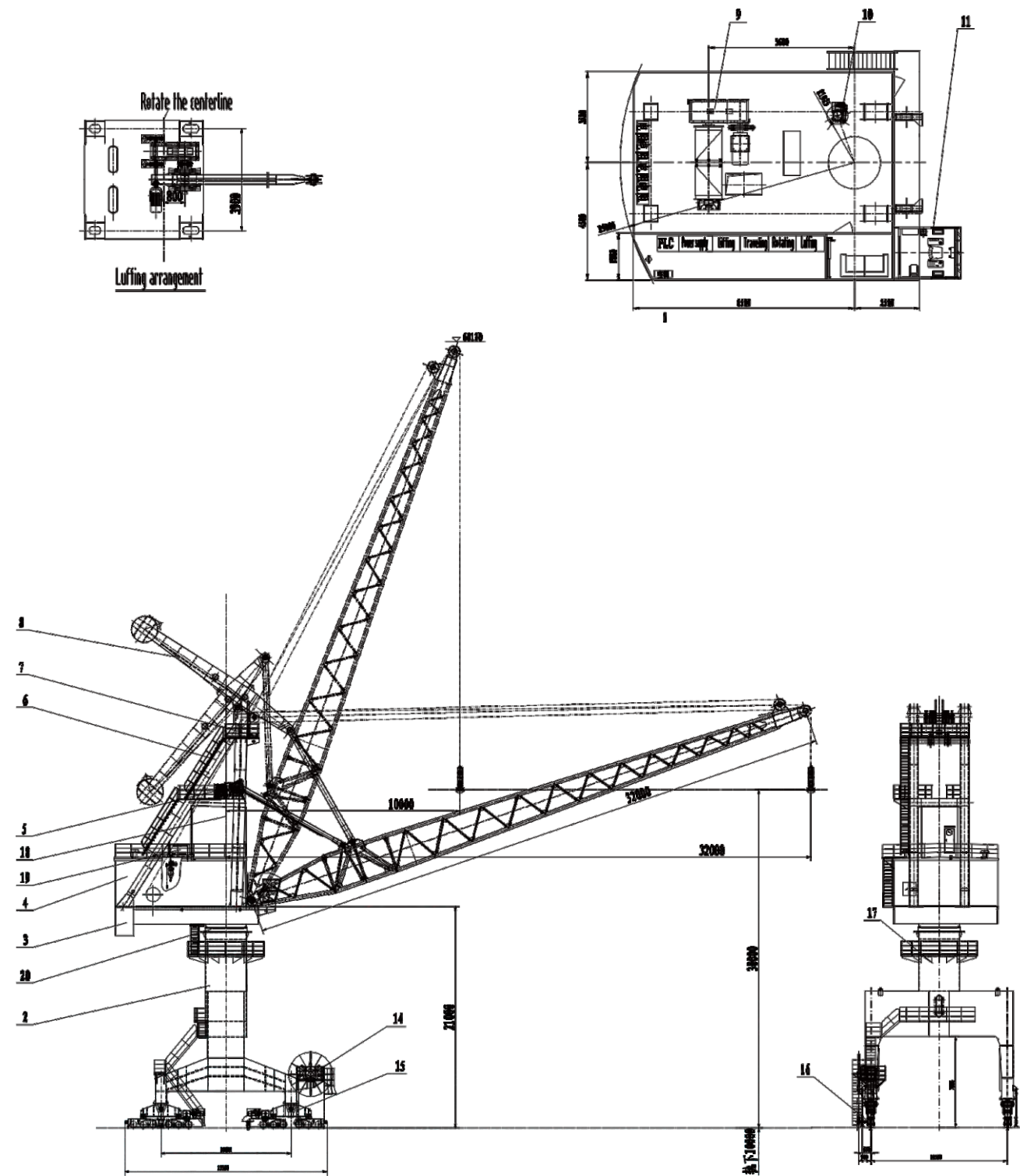
Shipbuilding gantry crane



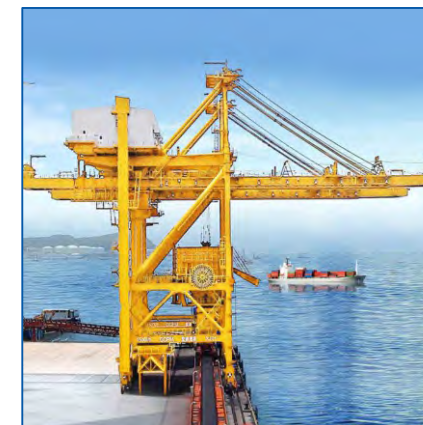
Rail type container gantry crane

PORT CRANE

- It consists of hoisting, slewing, luffing and traveling mechanism, the first three mechanisms are installed on the rotating part, it will work at each cycle. In addition to electrical protection device, it is also equipped with lifting weight or crane moment limiter, crane rail clamp safety device, etc.. It is mostly adopt level luffing system.
- Used on special-purpose quays for tough continuous-duty bulk handling.
- Possibility of providing specific portal solutions in line with terminal requirements.
- According to the usage, it can be divided into: 1. Loader and unloader portal crane 2. Shipbuilding portal crane 3. Construction and installation portal crane



Port crane drawing



Quayside container crane



Quayside container crane



Container Gantry Crane



Four-Line tape portal crane



Single jib portal crane

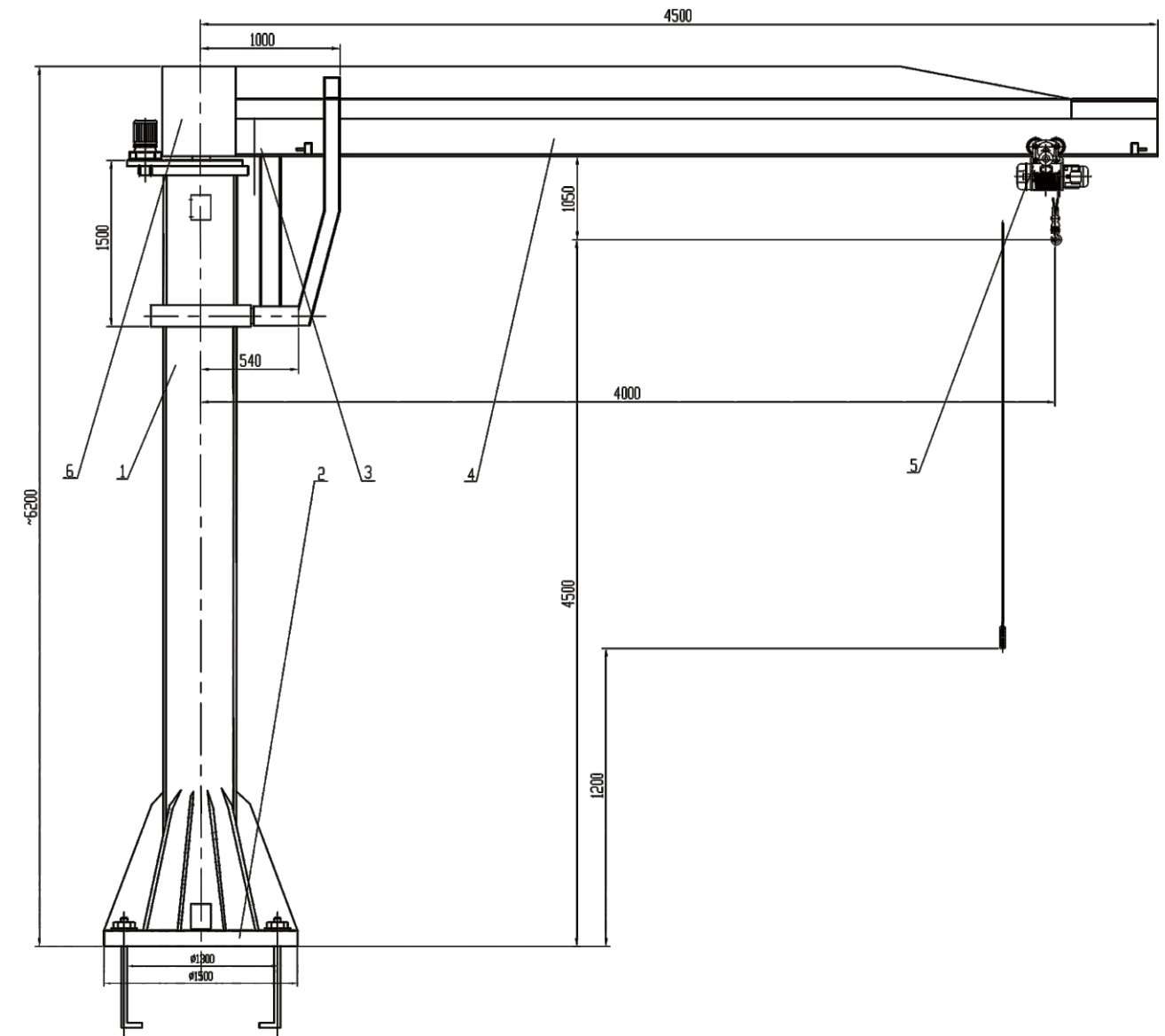


Single jib portal crane



JIB CRANE

Jib Crane is a new product which extended from Freestanding Jib Cranes. It adopts slowing ring and sectional arm structure. The hosting height of crane reaches 2.5-6 meters. The radius of working reaches 7-12 meters. As to operation, there are button control and telecontrol for choice. It is suit for metallurgy, railway, dock, mechanical manufacturing and so on. It also can replace bridge crane and gantry crane in many suitations. Because of high profit with less investment. This type of machine is really popular in international market.



Wall mounted jib crane



Free stand column jib crane

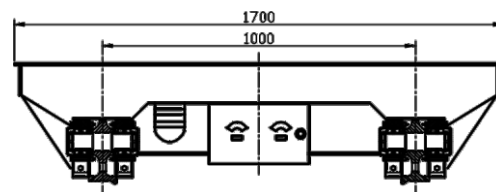
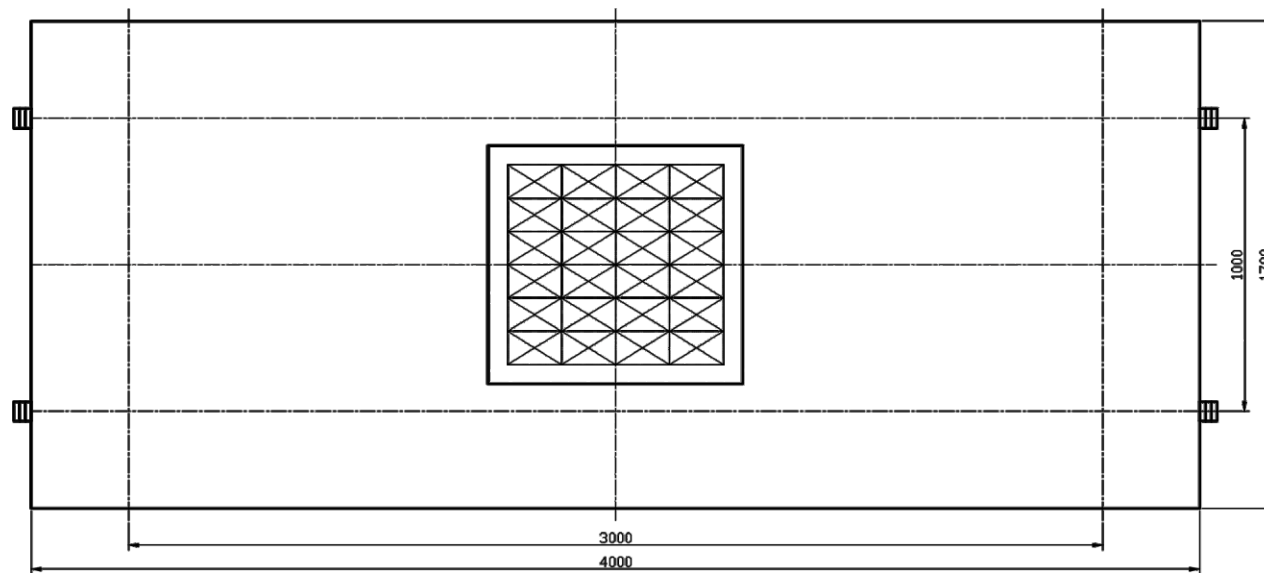
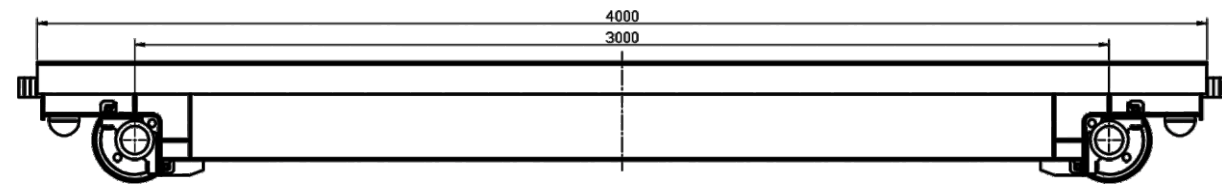


Wall traveling jib crane

Jib crane drawing

TRANSFER CART

- The transfer carts machine is designed for transporting heavy cargoes or equipment from one bay to another in factory. It can be used indoor or outdoor. The fields include metallurgy, foundry, new factory construction and shipbuilding and so on. With different styles and standard capacities up to 300 tons, we have the solution you need and each style can be designed for your specific application.
- Our transfer cart model main contains KPD, KPJ, KPT and KPX, If you are unsure as to what type of transfer cart will best serve your needs. Spending a few minutes now discussing the needs of your application could save you dollars in the future. According to your business needs, we will provides you with the most professional products ,our products are found in all sectors, with excellent craftsmanship and technical team, so we produce transfer cart applications in various industries have been widely used.



Transfer cart drawing



Rail transfer cart



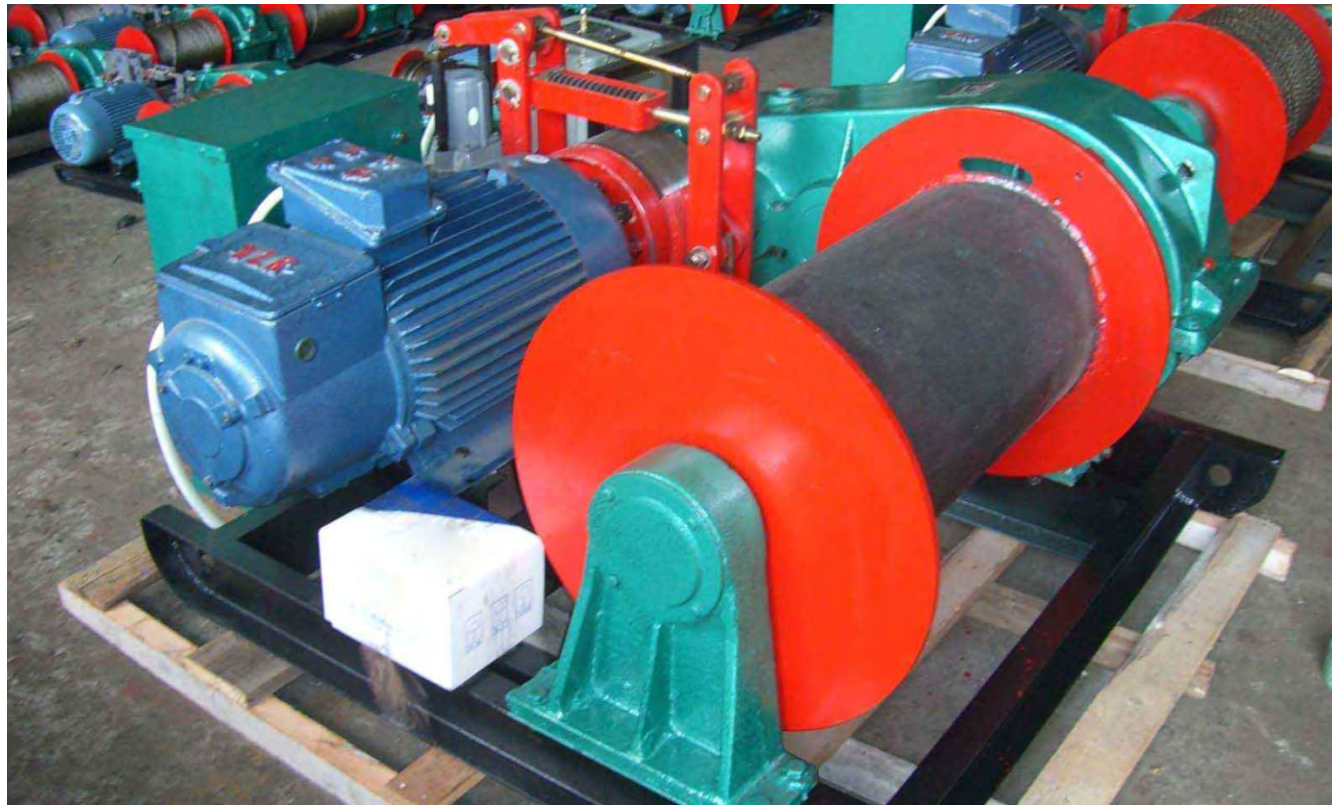
Trackless battery transfer cart



Rail transfer cart with small track gauge and large table



Turnplate rail transfer cart



ELECTRIC WINCH

- The winch is a device that drives the drum and rope by an external force to complete the traction work. The direction of the force can be vertical, horizontal, or inclined. It is mainly used in bridge and gantry crane, factory, mining, construction site, port, etc.



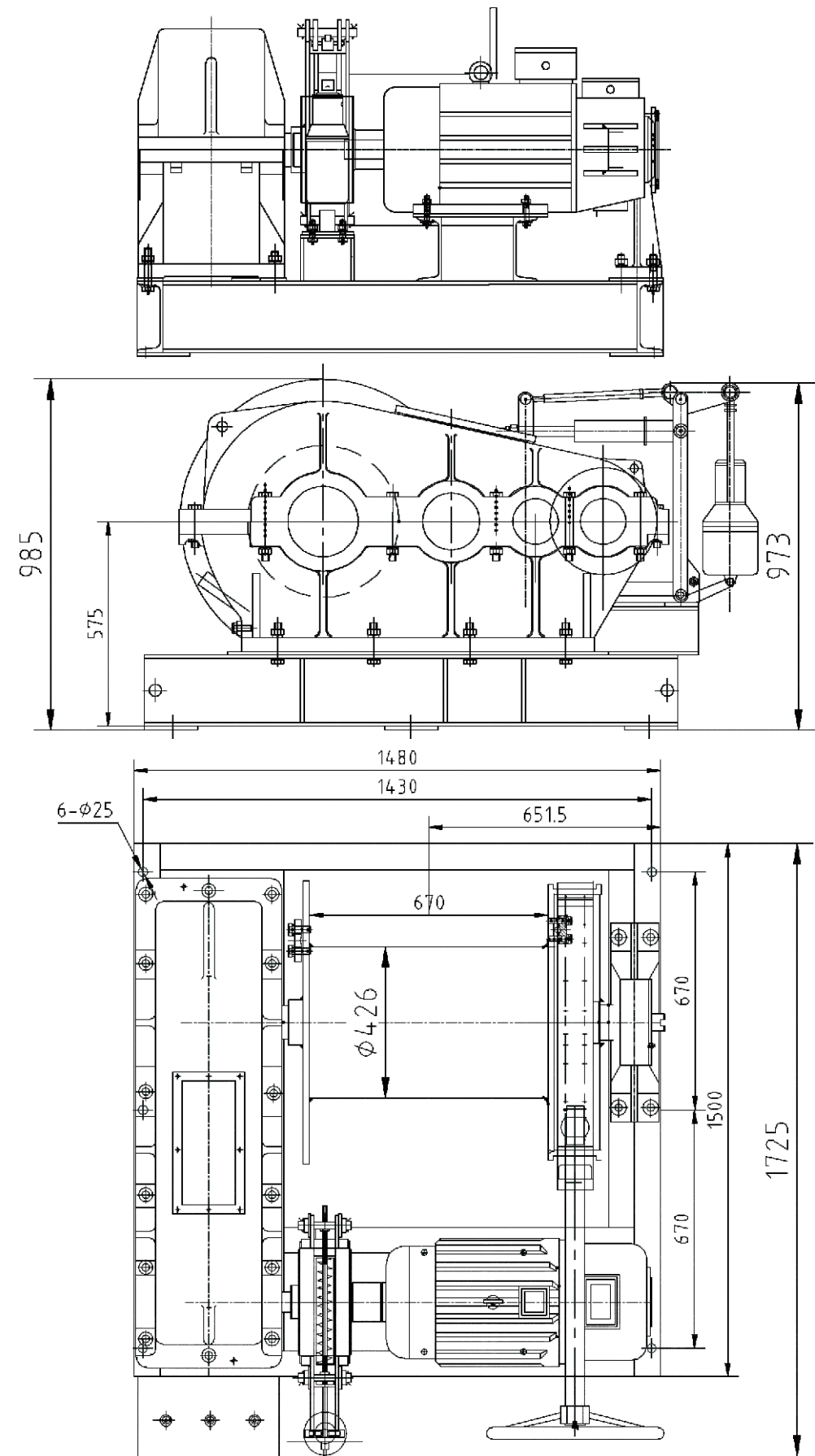
Electric winch



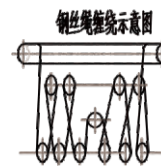
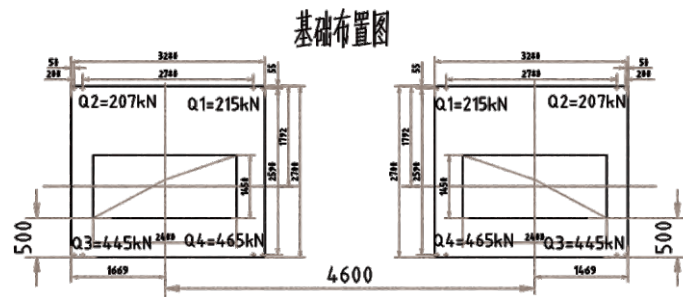
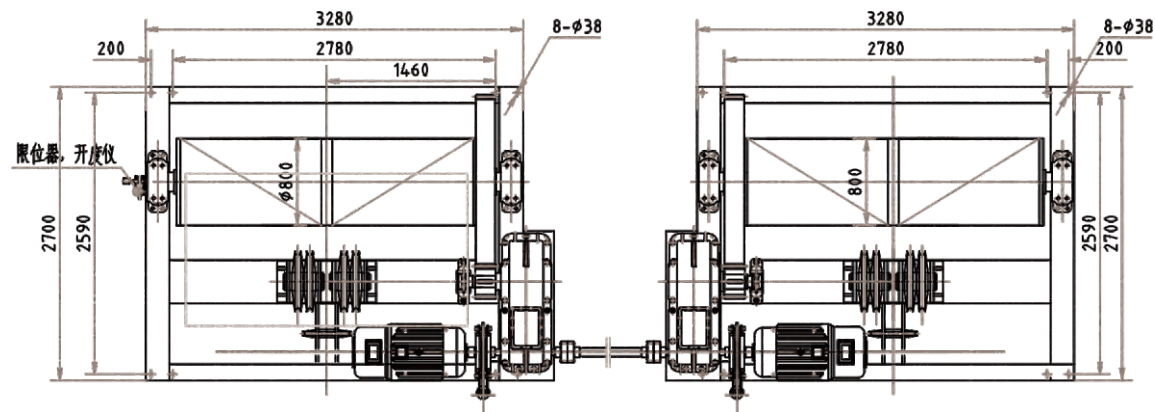
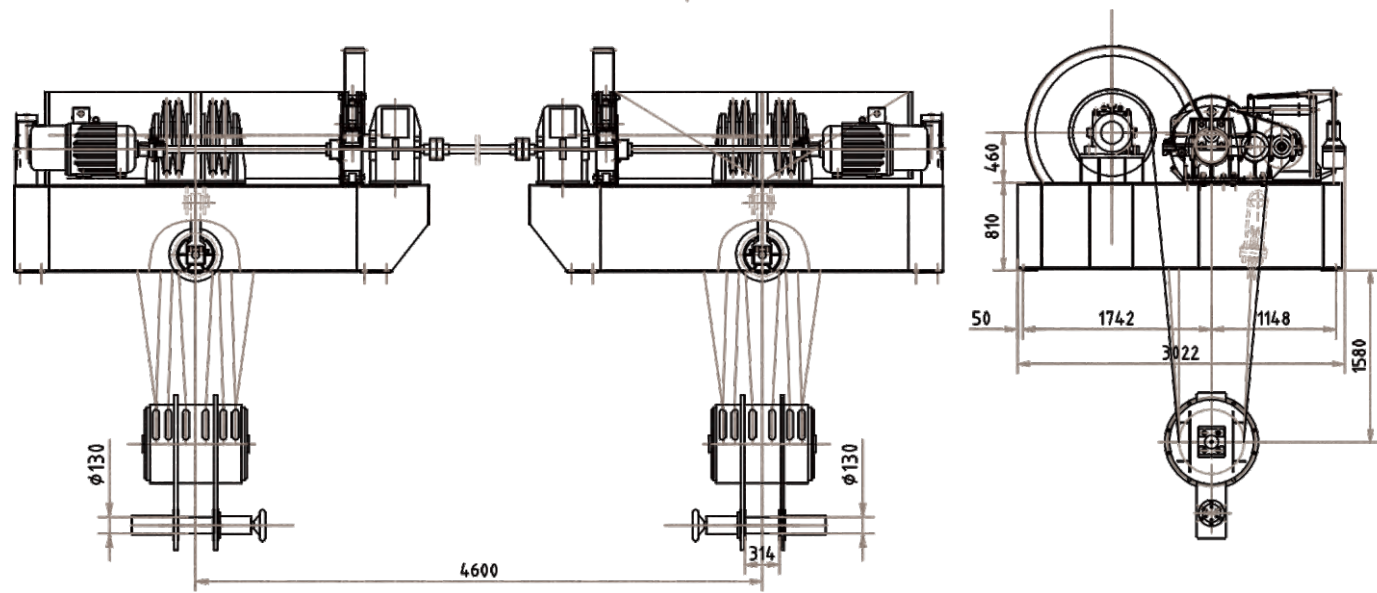
Diesel winch



JK Single type winch



Electric winch drawing



Gate hoist drawing

GATE HOIST

- The gate hoist is suitable for all kinds of large water supply and drainage, water conservancy, and hydropower projects. Controlling the Lifting and lowering of cast iron and steel gate to achieve the purpose of opening and closing the watergate.



Winch trolley for gate hoist



Winch trolley for hydropower projects

ELECTROMAGNET AND HANG BEAM



Square electromagnet



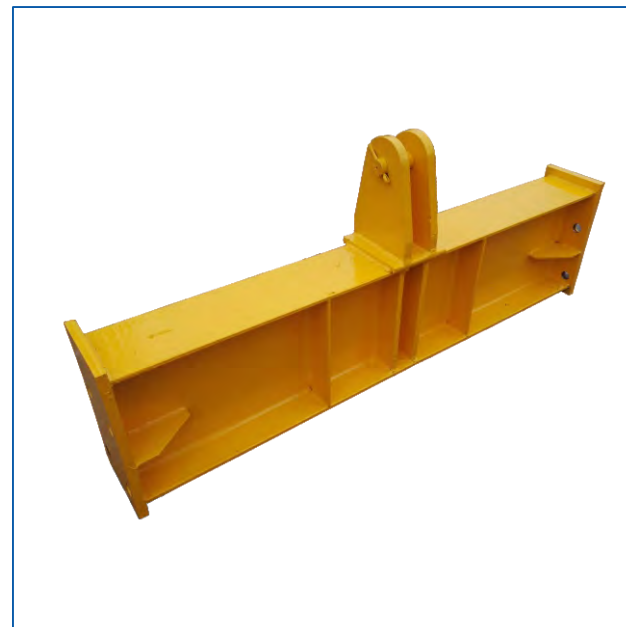
Circular electromagnet



Hang beam



Electromagnet



Single point lifting beam



Multiple lifting point beam



Main girder



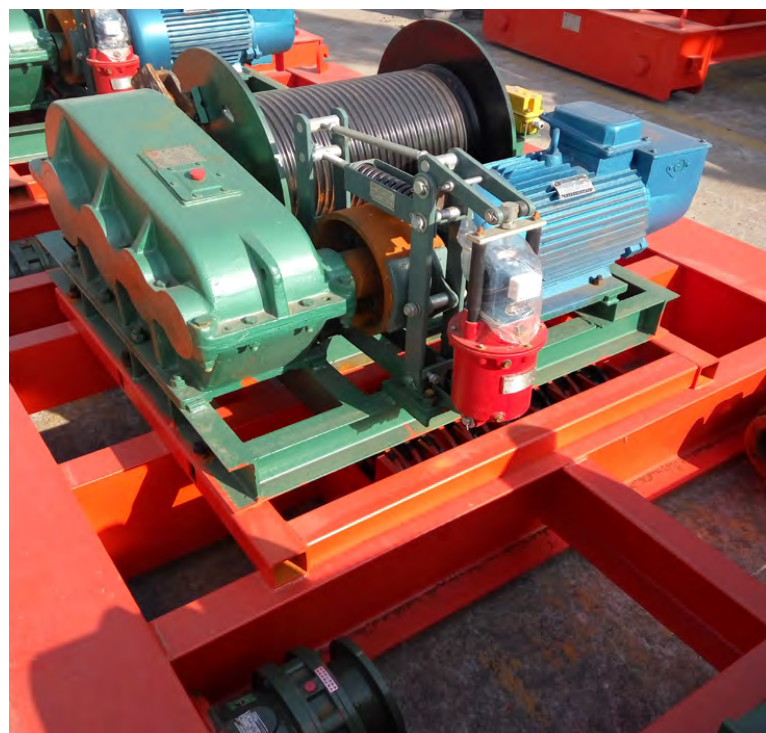
End beam



Hook

WE CAN ALSO OFFER OTHER PARTS

winch Trolley



Mechanical flip steel coil tongs



Grab





Pendent control



Crane Cabin



Remote control

WE CAN ALSO OFFER OTHER PARTS

wheels



drum



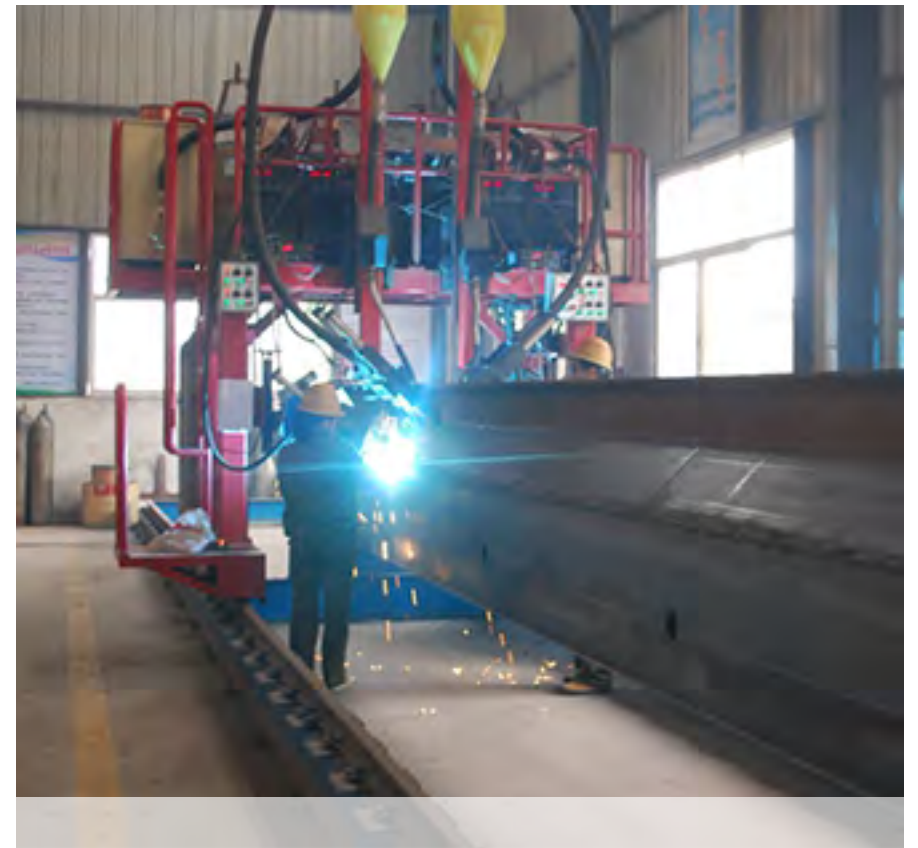
motor





DOUBLE GIRDER OVERHEAD CRANE PRODUCTION PROCESS





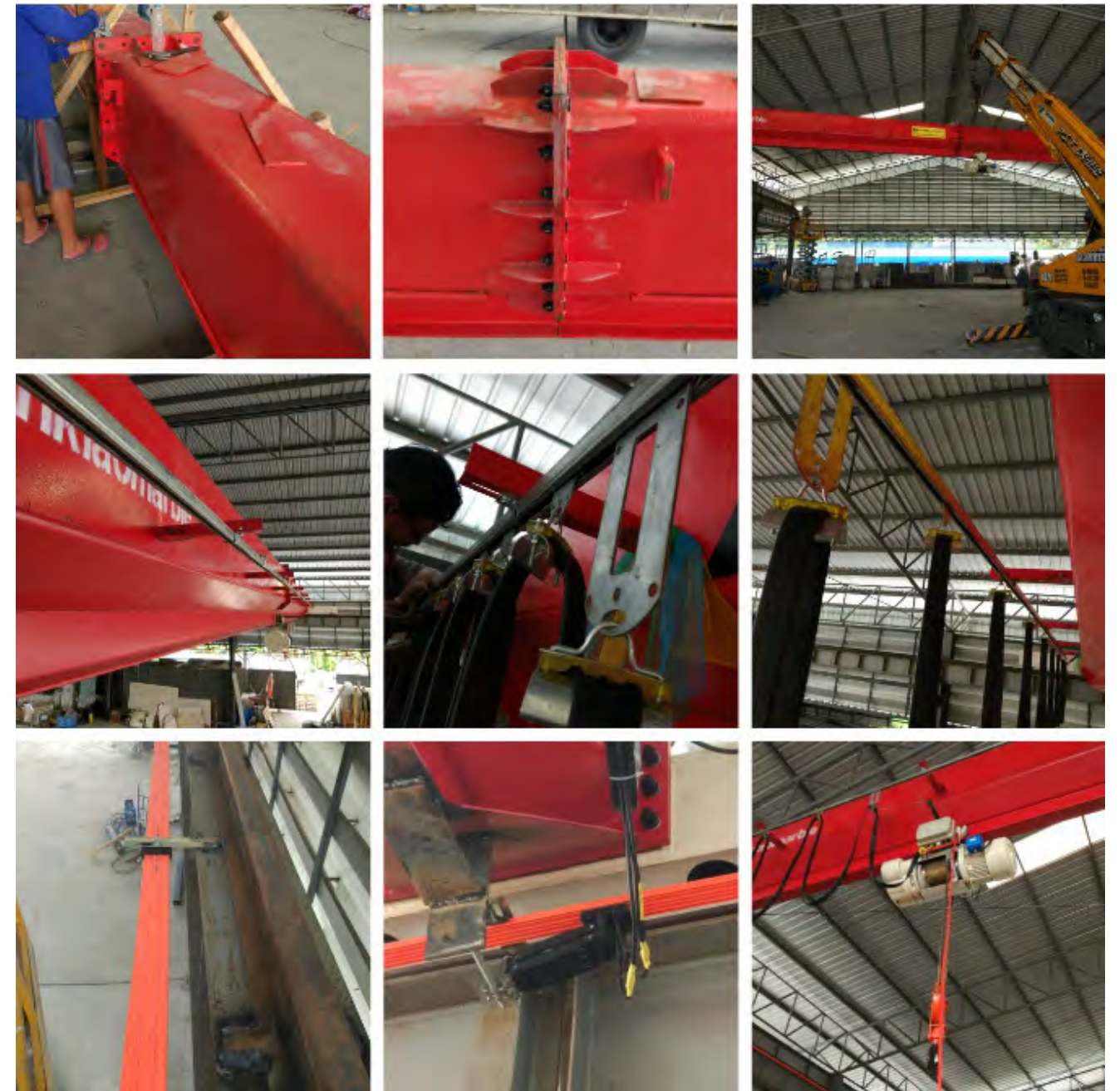
SINGLE GIRDER OVERHEAD CRANE PRODUCTION PROCESS





The first bridge erecting machine in Bolivia

EXPORT CASE



Installation of 10t single beam bridge crane in Uzbekistan



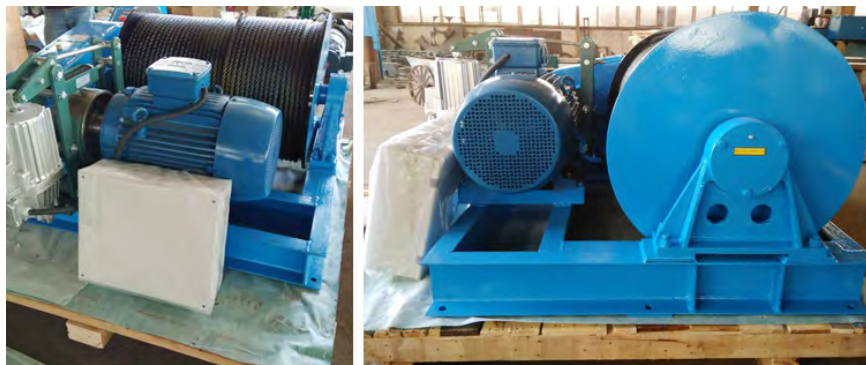
Philippines single girder gantry crane delivery



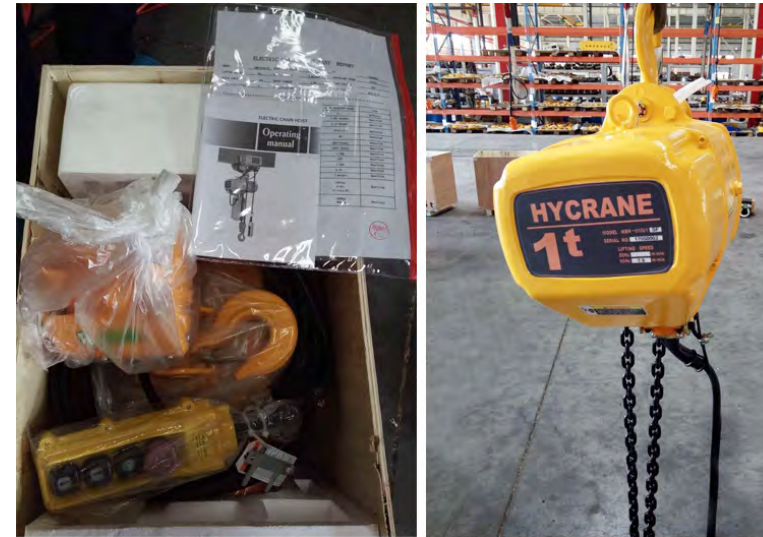
EXPORT CASE



Delivery of electric flat cars in Bangladesh



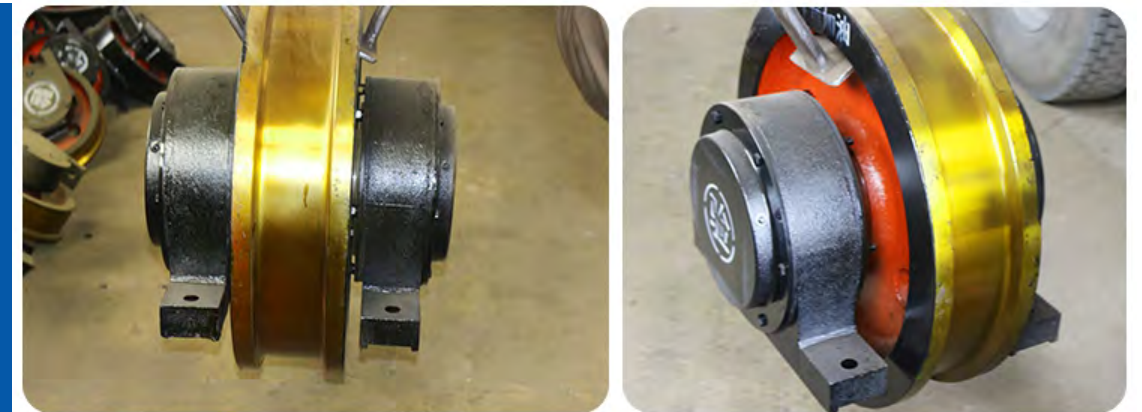
Shipment of winches in Zambia



Croatia chain hoist delivery



Spanish wheels shipped



» AFTER-SALES SERVICE PROMISES

01

Quality problems of products sold by our company will be solved as per the "Three Guarantees" system of our company by the "Three Guarantees" service team

02

Related personnel will be sent to the site immediately after receiving quality complaints (by call, letter or oral notice) from clients

03

Personnel involved in after-sales service shall be serious and considerate in handling the problem to make clients care-free

04

In addition to solve quality problems, personnel involved in after-sales service shall train clients, answer their technical inquiries and related questions free of charge

05

Related cost for products with quality problem will be shouldered by our company. Our company charges for quality problems caused by clients (or problems after the warranty term), but

06

Establish the client-orient concept to offer timely, serious, considerate and complete service, and value the images of the company and clients all the time to serve the company and clients.

AFTER-SALES SERVICE PROMISES